



**VANTEC
SOLUTIONS**

XPORT ELEMENTS – User Manual



Version 1.0

August 2017



Table of Contents

1. Introduction	2
2. Installation	3
3. License Validation	4
4. Copy / Paste Procedure	6
4.1. Step 1: Run AutoCAD® Plugin	6
4.2. Step 2: Choose Element Type and Units	7
4.3. Step 3: Select Elements	7
4.4. Step 4: Run ETABS® Plugin	9
4.5. Step 5: Choose Story Range and Paste	10
4.6. Step 6: Close the Plugin	11
5. Support	11



1. Introduction

XPORT ELEMENTS allows users to copy 2D objects from AutoCAD[®] and paste them as 3D elements in ETABS[®].

This copy / paste plugin has two simple interfaces: one for AutoCAD[®] and one for ETABS[®], as shown in *Figure 1*. In the AutoCAD[®] interface, the user can select and copy polyline boundaries of walls, slabs and columns. The ETABS[®] interface converts these boundaries into model objects and automatically assigns the respective section properties.

The process is simple and straightforward, and unlike other exporting procedures, it avoids the need of inserting the entire DWG/DXF file into ETABS[®].

¹ Autodesk and AutoCAD are registered trademarks or trademarks of Autodesk, Inc., and/or its subsidiaries and/or affiliates in the USA and other countries.

² ETABS is a registered trademark of Computers and Structures, Inc. in the USA and other countries.

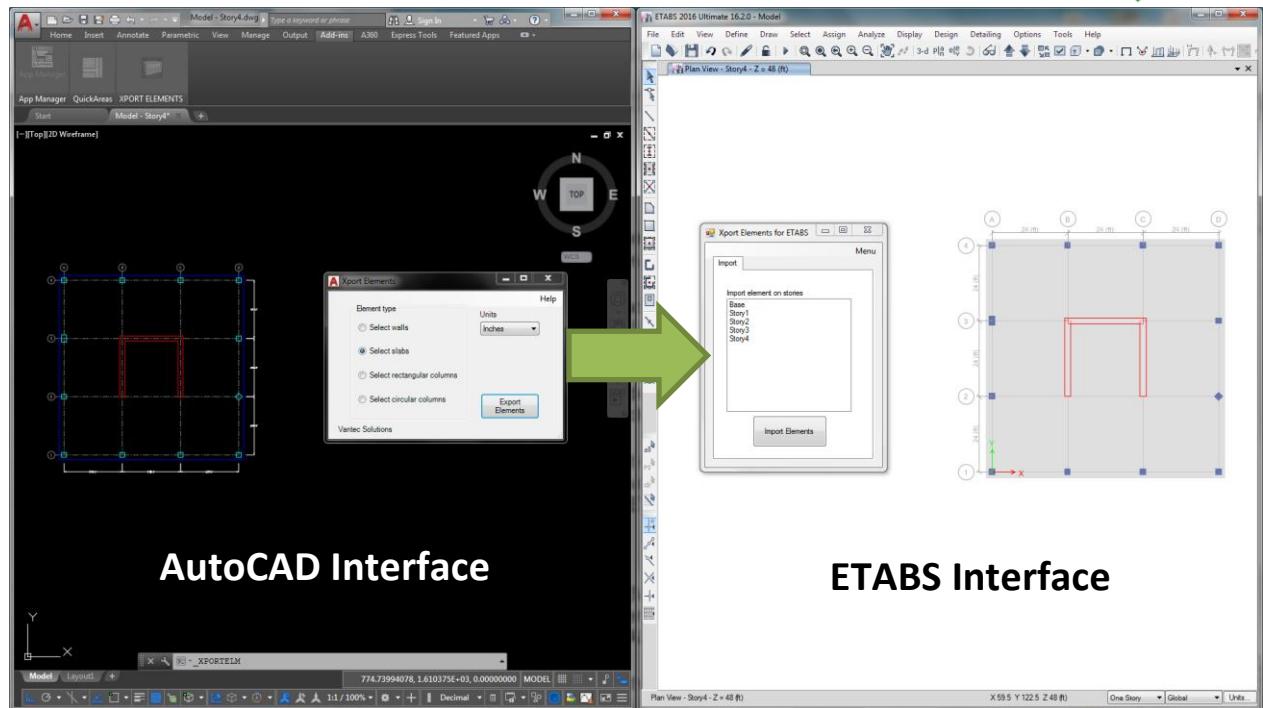


Figure 1

2. Installation

To install the XPORT ELEMENTS plugin, extract the zip file that you received in your email inbox and run the MSI file corresponding to your ETABS[®] version (2015 or 2016).

If you want to install the program for several users in the same computer, run the MSI file on any account (user1) and then activate the plugin following the steps in the License Validation section. After the license activation is complete, copy the “ETABS 201X.ini” file from



“C:\Users\user1\AppData\Local\Computers and Structures\ETABS 201X”

Onto the folder

“C:\Users\user2\AppData\Local\Computers and Structures\ETABS 201X” and so on.

3. License Validation

The first time the application is launched, the user will be asked to validate the license. As shown in *Figure 2*, the program will create a text file with a Request Code that must be sent to Vantec Solutions (support@vantecsolutions.com). Please also forward the confirmation email that you received either from our website or the Autodesk App Store with the order number.

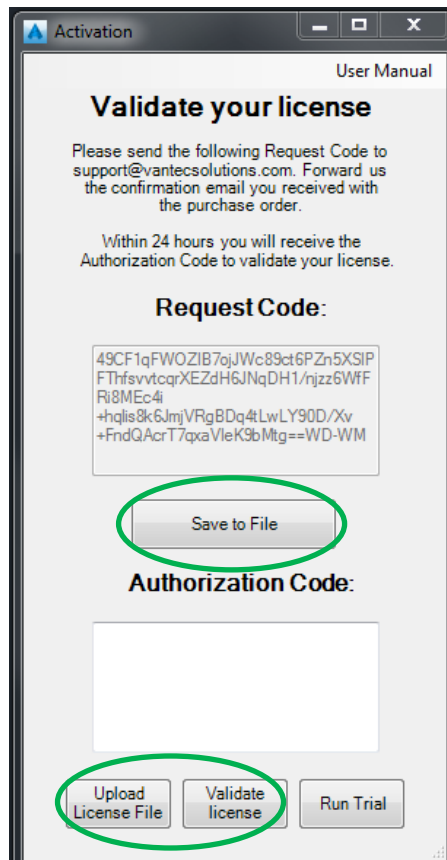


Figure 2

Within 24 hours we will send you back a text file with the Authorization Code. You must upload this file by clicking “Upload License File” and then “Validate License”. In the meantime, you can run the program in trial mode using the “Run Trial” button.



4. Copy / Paste Procedure

4.1. Step 1: Run AutoCAD® Plugin

The AutoCAD® interface of the plugin can be launched by clicking the corresponding button at the AutoCAD's Add-ins tab, as shown in *Figure 3*, or by typing XPORTELM in the command line.

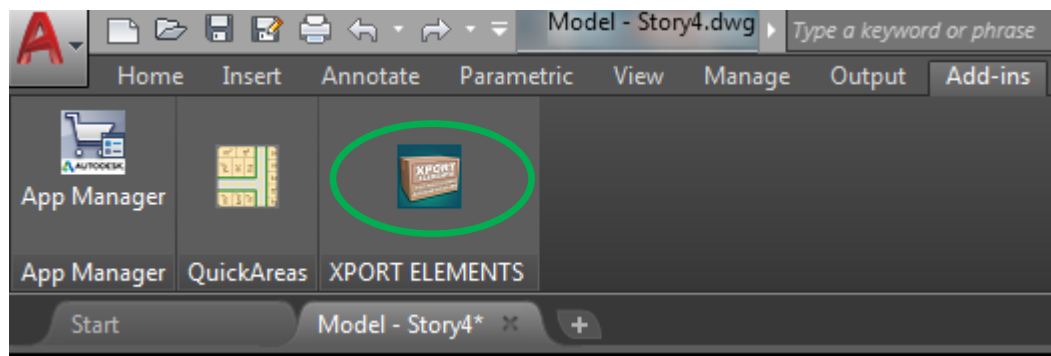


Figure 3

The AutoCAD® interface of the program is shown in *Figure 4*.

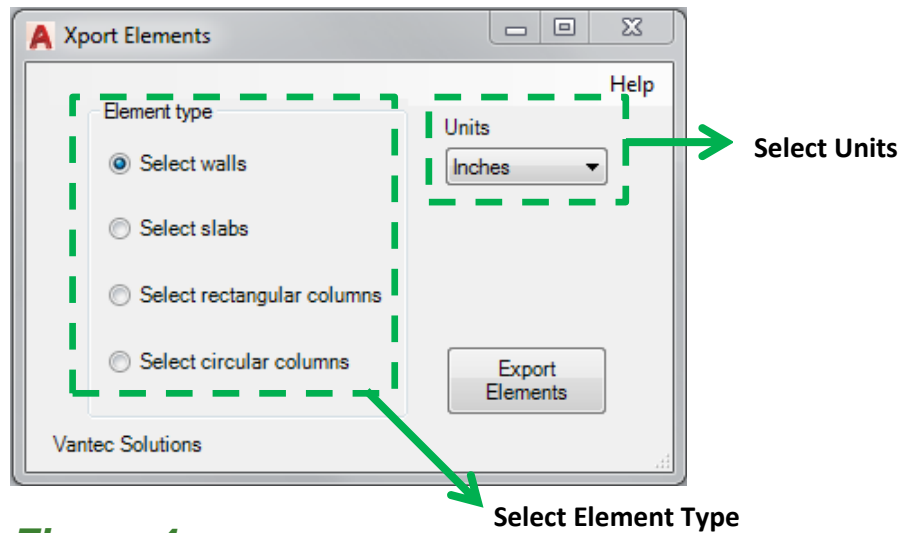


Figure 4

4.2. Step 2: Choose Element Type and Units

The next step is to indicate the type of element that will be exported. This will determine how the plugin will export the drawing object to ETABS[®]. It is also required from the user to indicate the units of the drawing objects. By default, the program will select the units assigned to the drawing document.

4.3. Step 3: Select Elements

To export walls, slabs or rectangular columns, select closed polylines. To export circular columns, select circles. *Figure 5* shows the walls shapes that can be exported.

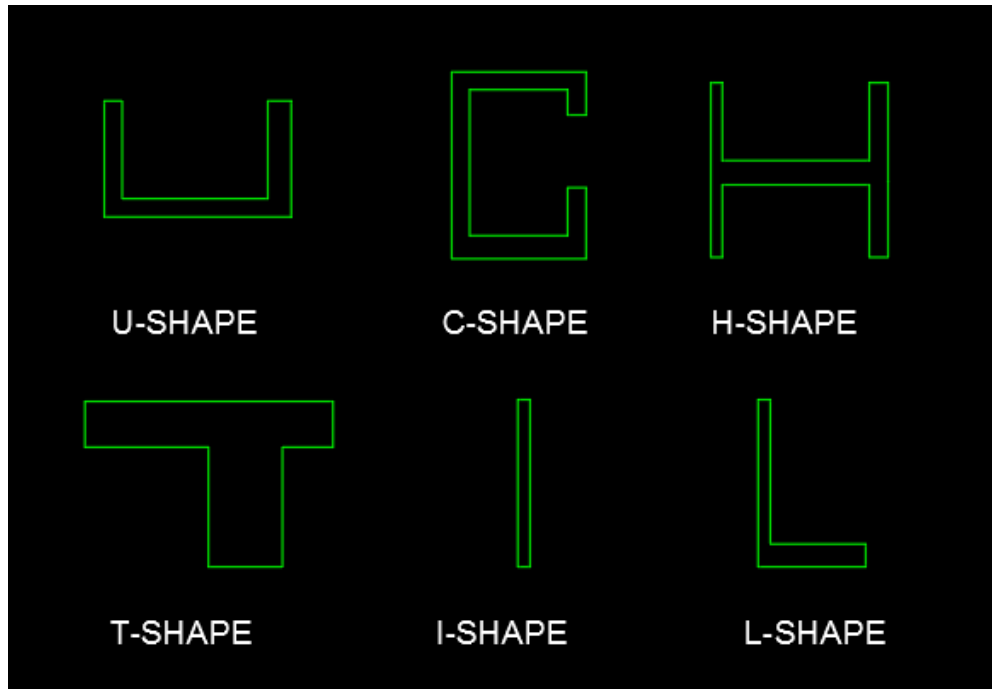


Figure 5



4.4. Step 4: Run ETABS® Plugin

The ETABS® interface of the plugin can be executed by clicking the Tools menu, as shown in *Figure 6*, and then clicking on XPORT ELEMENTS. In each session, ETABS will display a warning asking the user to authorize the plugin execution. This warning is shown in *Figure 7*.

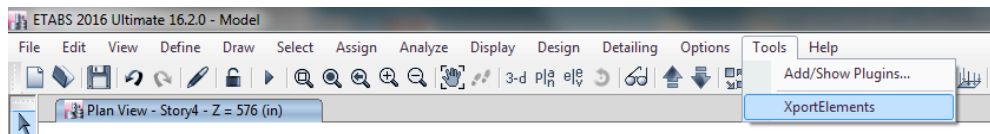


Figure 6

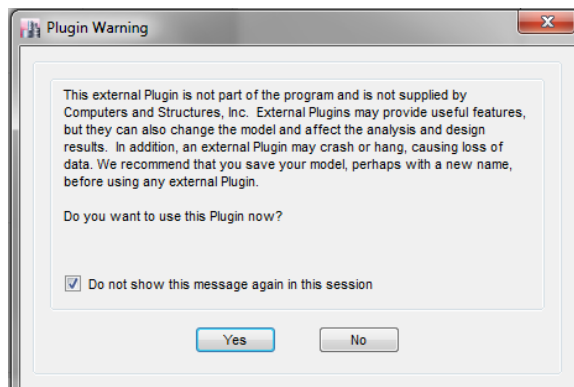


Figure 7



The ETABS[®] interface of the program is shown in *Figure 8*.

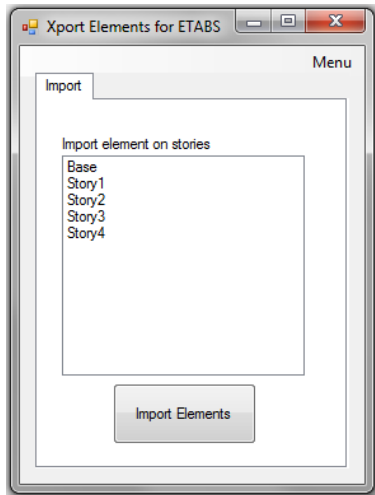


Figure 8

4.5. Step 5: Choose Story Range and Paste

In the ETABS[®] interface, the user must select the range of stories where the plugin should paste the elements copied from AutoCAD[®]. Then click on Import Elements.

The program will prompt to select a material and shell model type for walls and slabs. In the case of columns, only material will be required.



In the case of slabs, the program will also ask for the slab thickness.

The plugin will analyze the data copied from AutoCAD[®] and automatically find the centerlines for each wall. A single shell element is added in the ETABS[®] model along each one of these centerlines.

The plugin will also determine from the AutoCAD[®] element the thickness for each wall, create a new section property that matches the wall thickness and assign it to the respective shell element.

4.6. Step 6: Close the Plugin

Close the plugin after the paste is done. Do not keep the plugin running while opening a different ETABS[®] model.

5. Support

Please let us know if you have further questions. Our contact email is support@vantecsolutions.com.