



QuickConnections – User Manual



Version 1.0

October 2017



Table of Contents

1. Introduction	2
2. License Validation	3
3. Main Interface	4
4. Hide/Show Points	6
5. Creation of 3dPolyline Connections	8
6. Break Connections.....	9
7. Use Wildcard.....	10
8. Create Point Groups	13
9. Create Layers.....	13
10. Uninstall the App.....	14
11. Support.....	14



1. Introduction

The *QuickConnections* plugin for AutoCAD® Civil 3D® automatically connects COGO points based on their descriptions and point numbers. Close Civil 3D® and install the app by running the MSI file installer. After the installation is completed, launch the App by clicking the corresponding button at the Add-ins tab of Civil 3D®, as shown in *Figure 1*, or by typing **qconnect** in the command line.

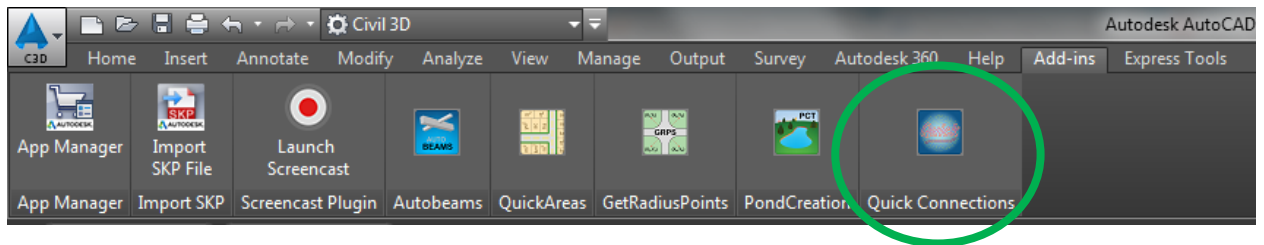


Figure 1



2. License Validation

The first time the application is launched, the user will be asked to validate the license. As shown in *Figure 2*, the program will create a text file with a Request Code that must be sent to Vantec Solutions (support@vantecsolutions.com). Please also forward the confirmation email that you received either from our website or the Autodesk App Store with the order number.

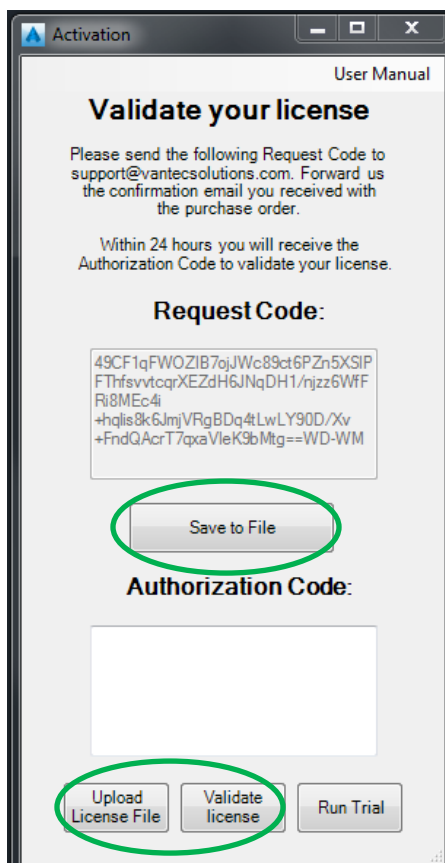


Figure 2



Within 24 hours we will send you back a text file with the Authorization Code. You must upload this file by clicking “Upload License File” and then “Validate License”. In the meantime, you can run the program in trial mode using the “Run Trial” button.

3. Main Interface

The interface of the program is shown in *Figure 3*.

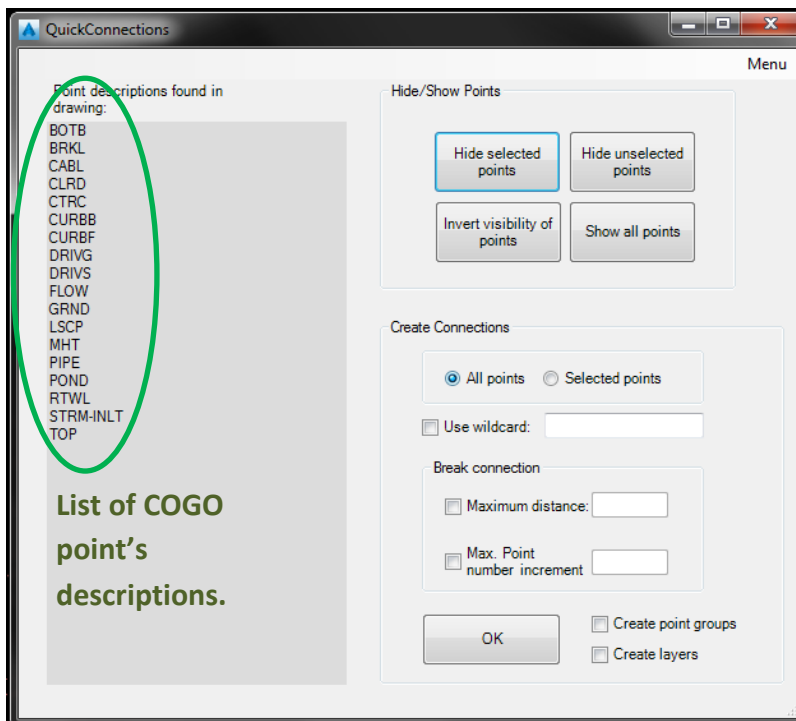


Figure 3

The program will automatically search for COGO points in the drawing and will list their unique descriptions in



the gray box shown in *Figure 3*. In this list, the user must select the descriptions for which the 3dpolyline connections will be created. *Figure 4* shows an example of this selection.

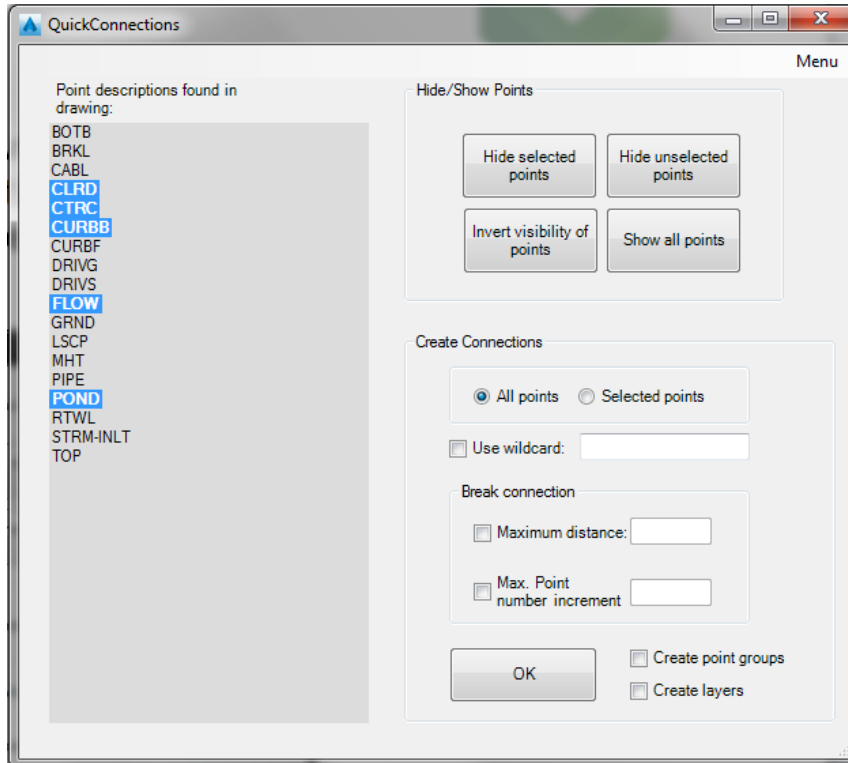


Figure 4



4. Hide/Show Points

In the app interface, the user must indicate if the 3dpolylines will be created connecting all the points in the drawing, or just the points that will be selected (*Figure 5*).

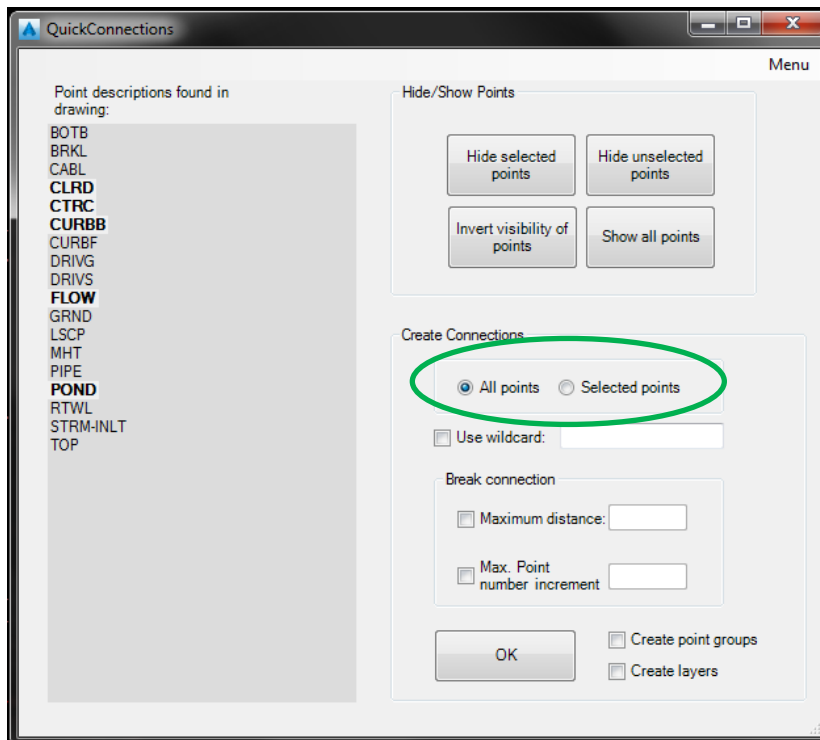


Figure 5

If “*Selected points*” is picked, after clicking the OK button the user will be prompted to select the points to be used in the creation of the 3dpolylines.



The *QuickConnections* app facilitates the selection of these points by allowing the user to temporarily hide the points that will not be used in the creation of the 3dpolylines.

Select the descriptions in the gray box and use any of the buttons shown in *Figure 6* to hide or show points in the drawings.

All the points will be shown again after closing the app.

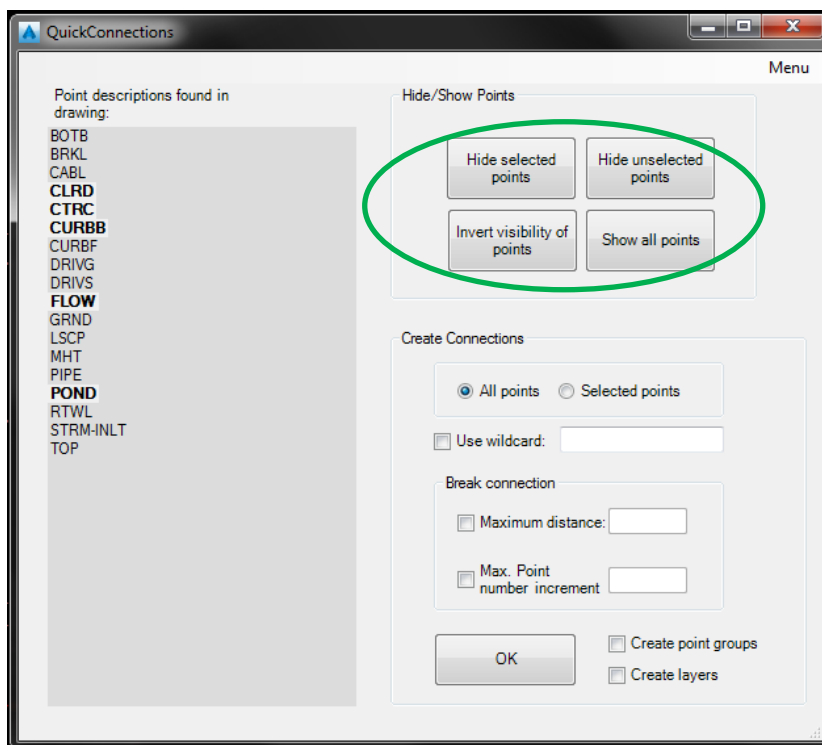


Figure 6



5. Creation of 3dPolyline Connections

After clicking the OK button, the app will create a 3dpolyline for each selected description, connecting the points based on their point number values (from smallest to largest). *Figure 7* presents an example of the created 3dpolylines.



Figure 7



6. Break Connections

The *QuickConnection* app allows the user to specify a maximum distance between points or a maximum point number increment. If these values are exceeded, the connecting polylines are automatically broken. *Figure 8* shows how these limits are entered in the interface, and *Figure 9* shows an example of the broken polylines.

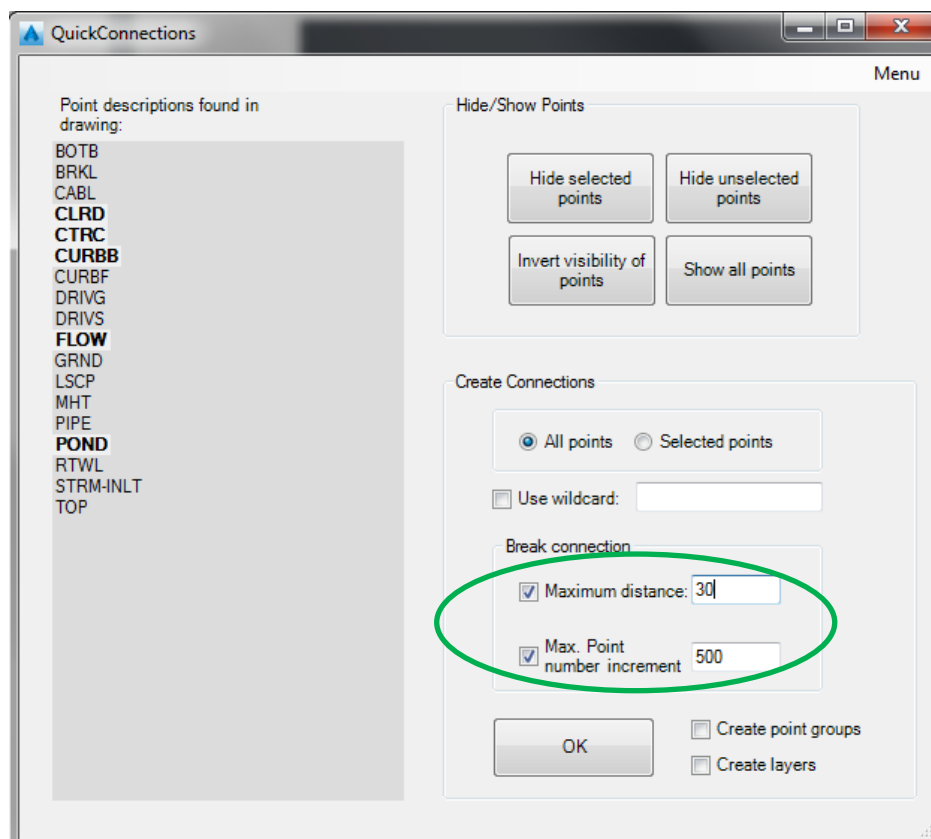


Figure 8

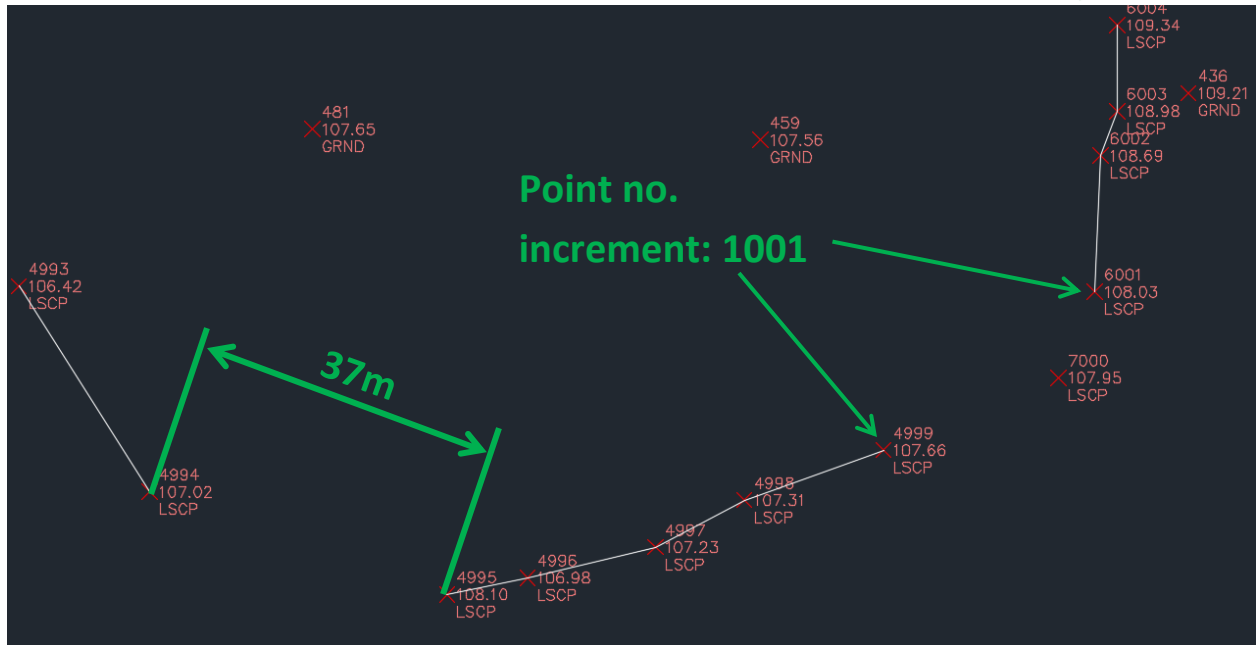


Figure 9

7. Use Wildcard

The app allows the user to connect points with different descriptions by using a wildcard tool. Type the common description root in the textbox shown in *Figure 10*. The app will connect points with that common root and will ignore the remainder of the description. *Figure 11* shows an example of the use of a wildcard.

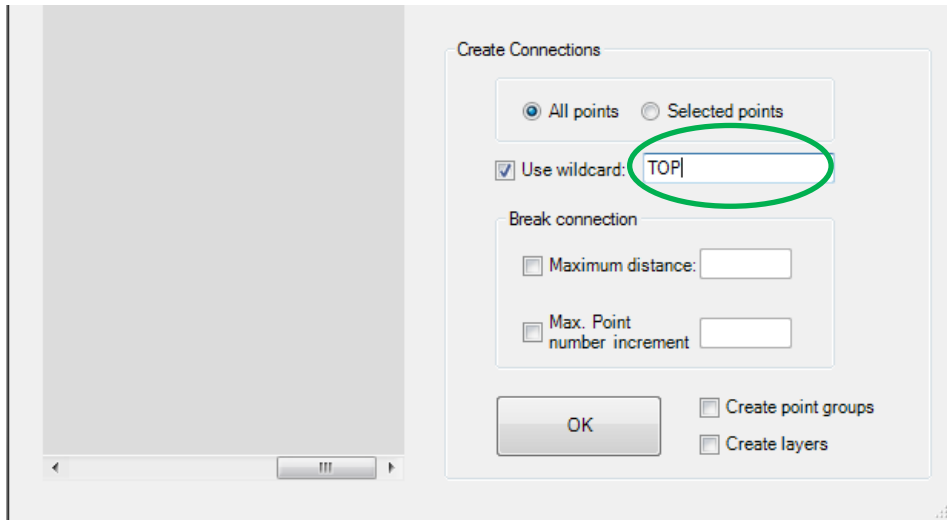


Figure 10

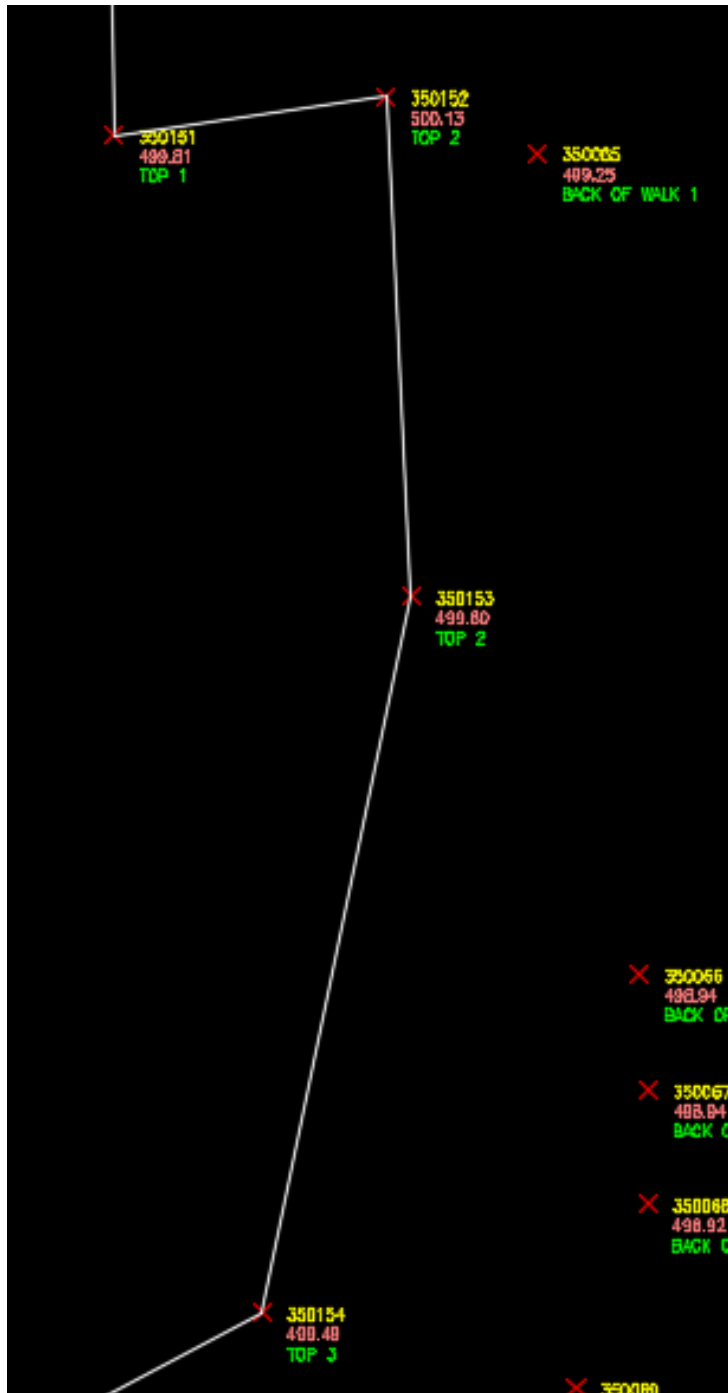


Figure 11



8. Create Point Groups

To automatically create point groups for the selected descriptions, click the “Create point groups” checkbox shown in *Figure 12*.

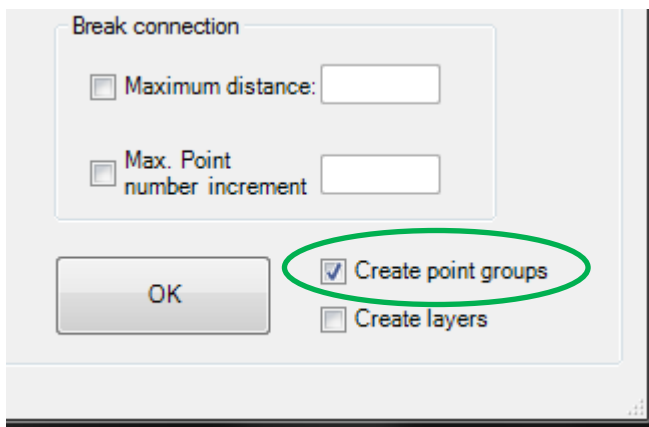


Figure 12

9. Create Layers

To automatically create layers for the selected descriptions, click the “Create point layers” checkbox shown in *Figure 13*.

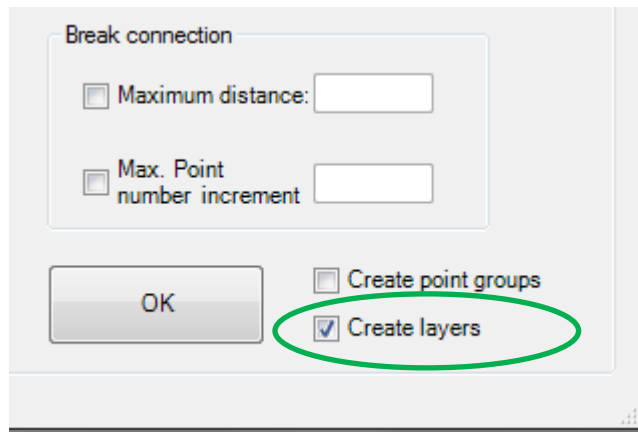


Figure 13

10. Uninstall the App

To uninstall the app, double click the MSI file installer and follow the instructions. If you don't have the installation MSI, you can go to the Control Panel, click on the *Uninstall a Program* link under the *Programs* heading, locate the App, right click it and select *uninstall*.

11. Support

Please let us know if you have further questions. Our contact email is support@vantecsolutions.com.