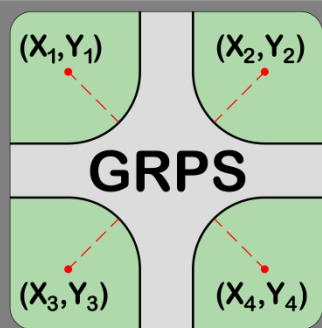


GetRadiusPoints – User Manual



Version 1.0

September 2016



Table of Contents

1. Introduction	2
2. Program Validation	2
3. Main Interface	4
4. Support.....	6



1. Introduction

The *GetRadiusPoints* app is an AutoCAD[®] Civil 3D[®] plugin that modifies a curve table style and inserts columns with the center point (northing and easting) of curve segments that are not part of an alignment.

The app can be launched by clicking the corresponding button at the Add-ins tab, as shown in *Figure 1*, or by typing **GRPS** in the command line.

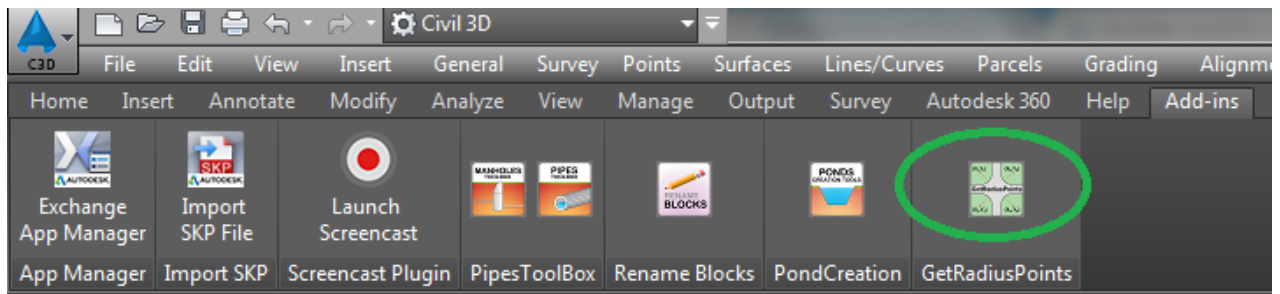


Figure 1

2. Program Validation

The first time the application is launched, the user will be asked to validate the license. As shown in *Figure 2*, the program will provide a Request Code that must be sent to Vantec Solutions (support@vantecsolutions.com). Please also forward the confirmation email that you

¹ Autodesk, AutoCAD and AutoCAD Civil 3D are registered trademarks or trademarks of Autodesk, Inc., and/or its subsidiaries and/or affiliates in the USA and other countries.



received either from our website or the Autodesk App Store with the order number.

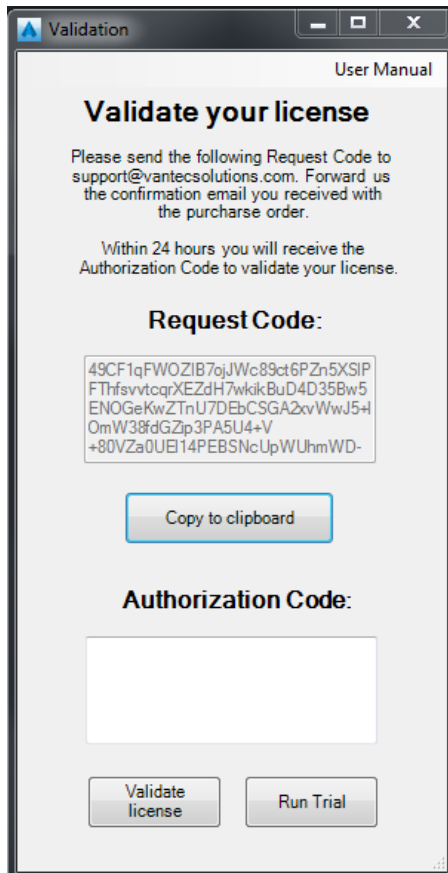


Figure 2

Within 24 hours we will send you back an Authorization Code that will let you run the program. In the meantime, you can run the program in trial mode using the “Run Trial” button.



3. Main Interface

Figure 3 shows the main window of the program. In this window the user must (1) select the Parcel Curve Table Style to which the northing and easting columns will be added, and (2) indicate the header texts for these columns.

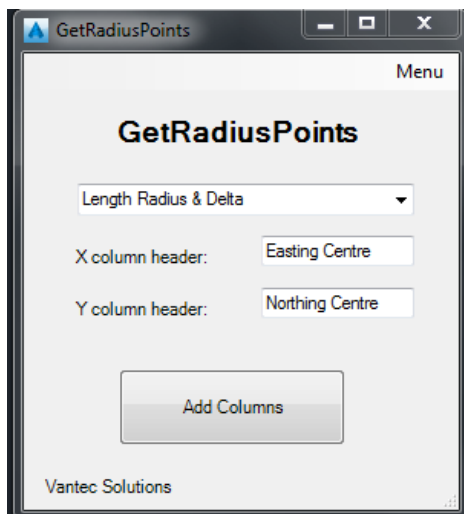


Figure 3

After clicking the “Add Columns” button, the selected table style will be modified. *Figure 4 and 5* show a curve table before and after the columns were added.

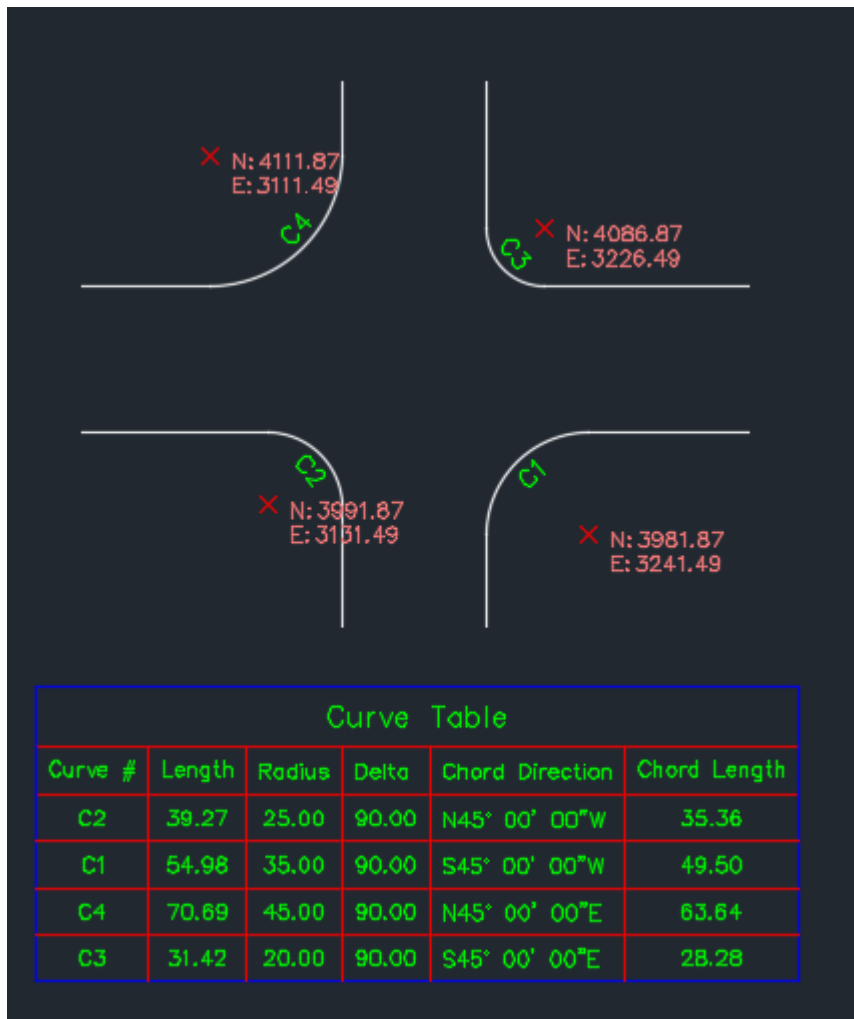


Figure 4

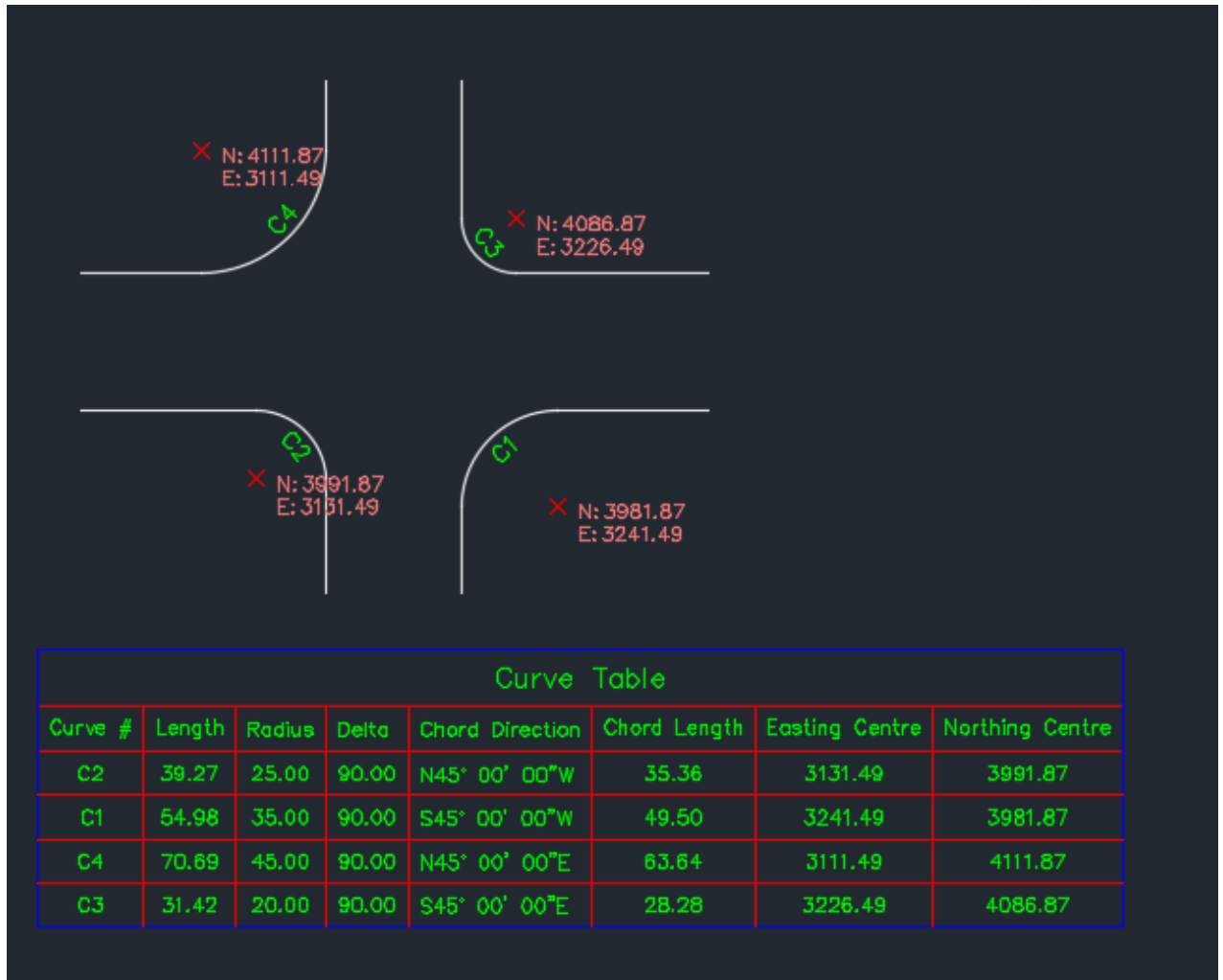


Figure 5

4. Support

Please let us know if you have further questions. Our contact email is support@vantecsolutions.com.